

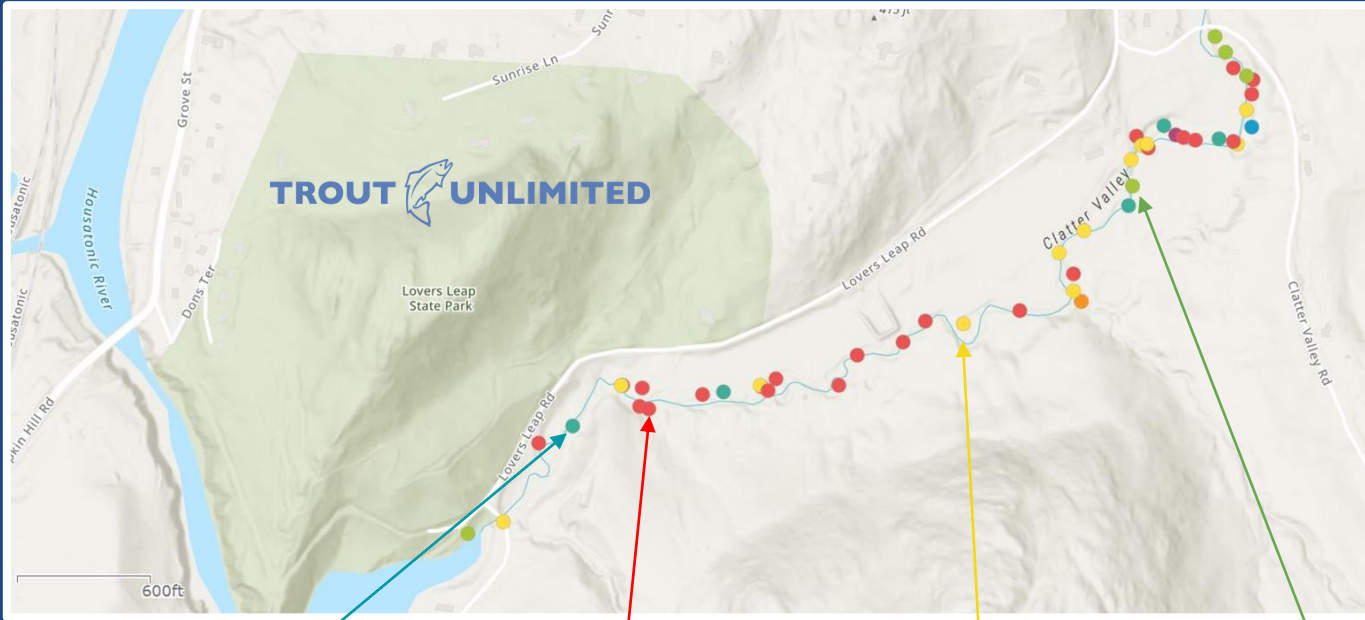
TOWN FARM BROOK: MAPPING THE FUTURE OF BROOK TROUT RESTORATION

IMPACTS ON HABITAT

Brook Trout are the only native trout species in Connecticut and are in decline due to habitat loss, climate change and a variety of other factors.

Using the **RIVERS app** from **Trout Unlimited**, we photo-documented areas of stream impairment. While our assessment of **Town Farm Brook** identified a sizeable population, we also uncovered a wide array of habitat degradation impacting the overall health of the stream, threatening the future of these native fish.

The primary impacts to the stream include **barriers to fish passage**, **lack of healthy riparian canopy**, and **bank erosion** leading to **siltation**.



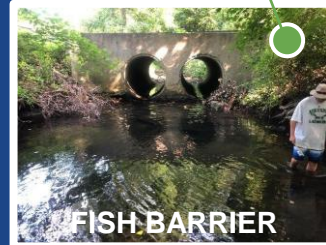
BANK EROSION



BROOK TROUT

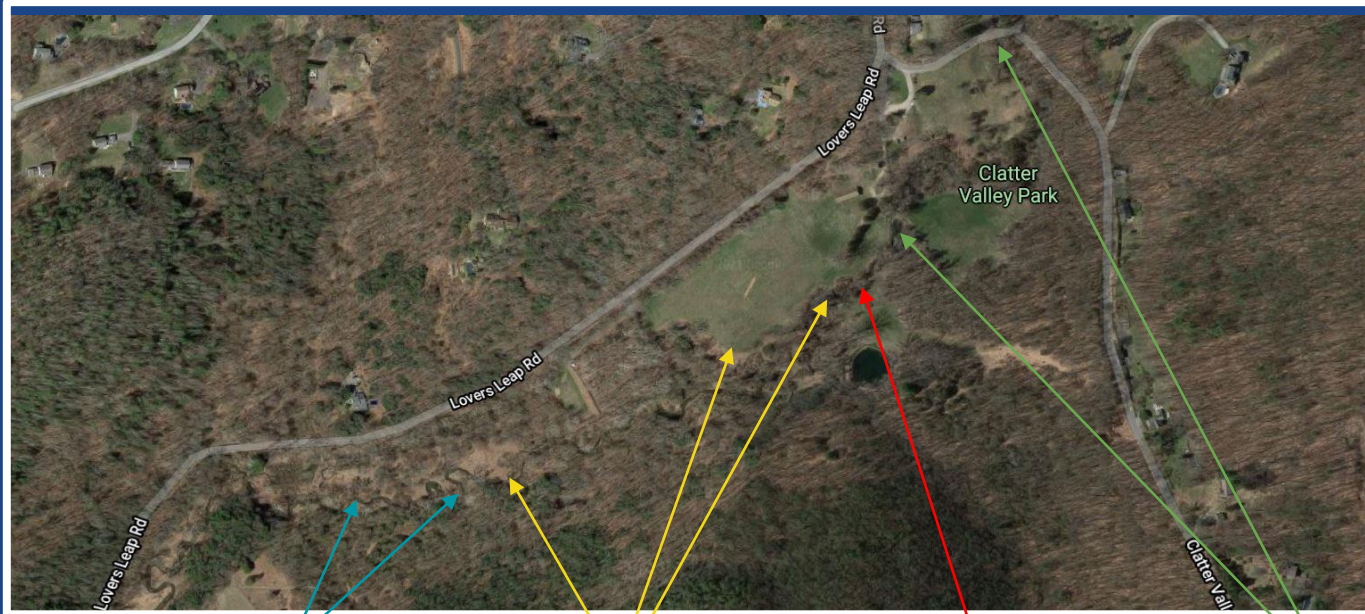


RIPARIAN BUFFER



FISH BARRIER

TOWN FARM BROOK: PROPOSED RESTORATION & MONITORING PROJECTS



NEXT STEPS TO RESTORATION

In order to **restore Town Farm Brook** and protect the future of the native Brook Trout living in its waters, we are **recommending** a series of habitat restoration projects, science and monitoring activities and community engagement efforts.

Connecting our work to the **broader New Milford and angling community** is essential in order to ensure the effort is sustainable and will continue beyond this generation.

Clatter Valley Park offers an excellent pilot project location for getting started in this effort! We have identified riparian buffer planting projects, in-stream habitat structures and barrier removal opportunities.



ROOT WADS



TREE PLANTING



MONITORING



REPLACE CULVERT

Learn more and volunteer: [Jeff Yates at jyates@tu.org](mailto:Jeff.Yates@tu.org)